

the TITLE   
SIERRA



NATURE & URBAN LIFE WITHIN REACH

ASSET  
wise



Rhom Bho Property

ESG

---

GROWING THROUGH CREATING  
SUSTAINABLE HAPPINESS



# theTITLE PROJECT PROGRESS



**68%**

**THE TITLE HERITAGE BANG-TAO**



**72%**

**THE TITLE SERENITY NAIYANG**



**34%**

**THE TITLE CIELO RAWAI**



**4.7%**

**THE MODEVA**



**2.9%**

**THE TITLE ARTRIO BANG-TAO**



**THE KATABELLO**

**PILING 14%**



**ADORA RAWAI**

**PILING 95%**



*the* **TITLE**  
**LEGENDARY**  
BANG-TAO

READY  
TO  
MOVE IN



A LUXURIOUS  
LIFE  
IN THE HEART  
OF BANG-TAO

YOUR LEGENDARY  
LIFESTYLE BEGINS HERE

With complete facilities  
for every need,  
every day is designed  
to inspire and delight.

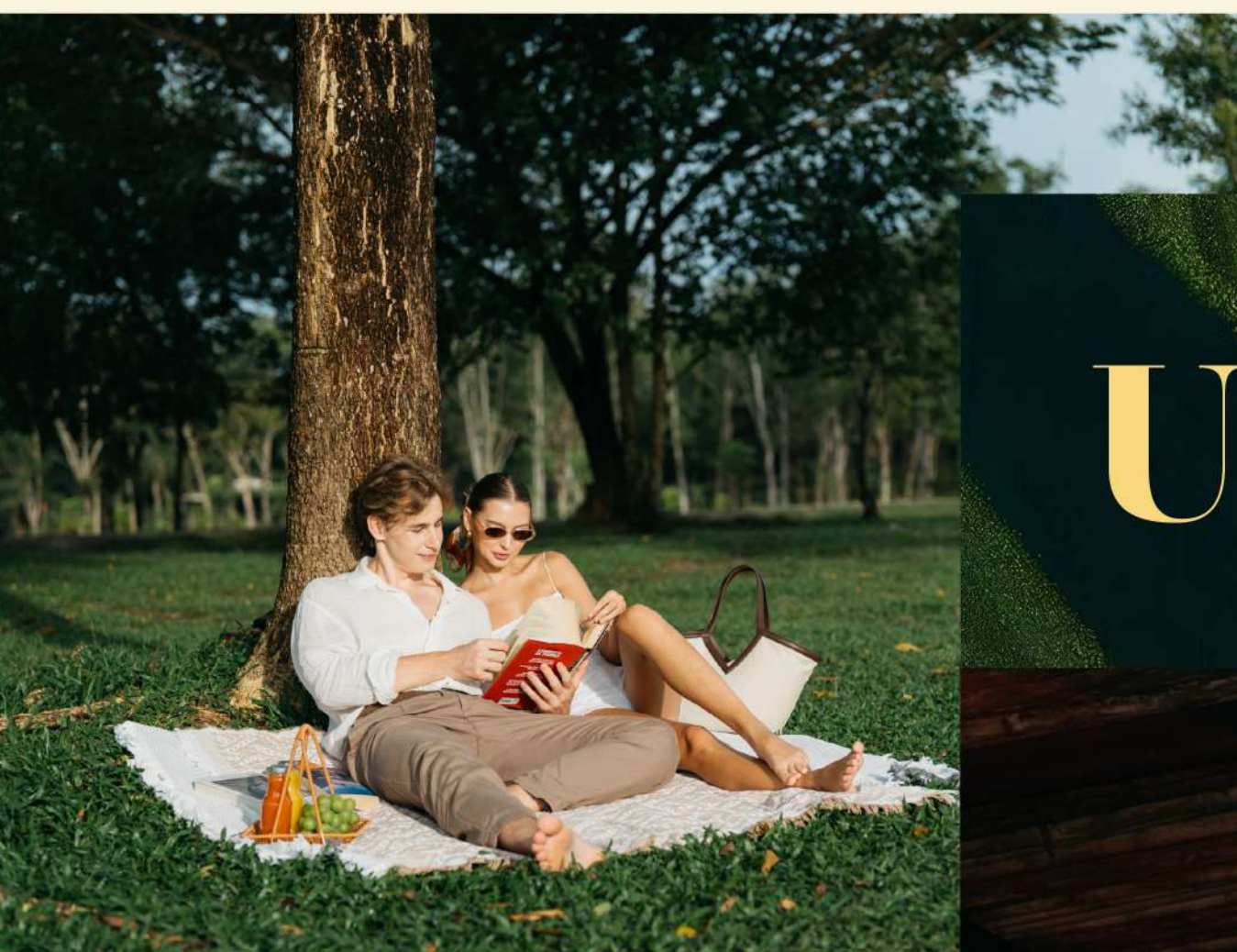
# NATURE & URBAN LIFE

WITHIN REACH



# PROJECT CONCEPT

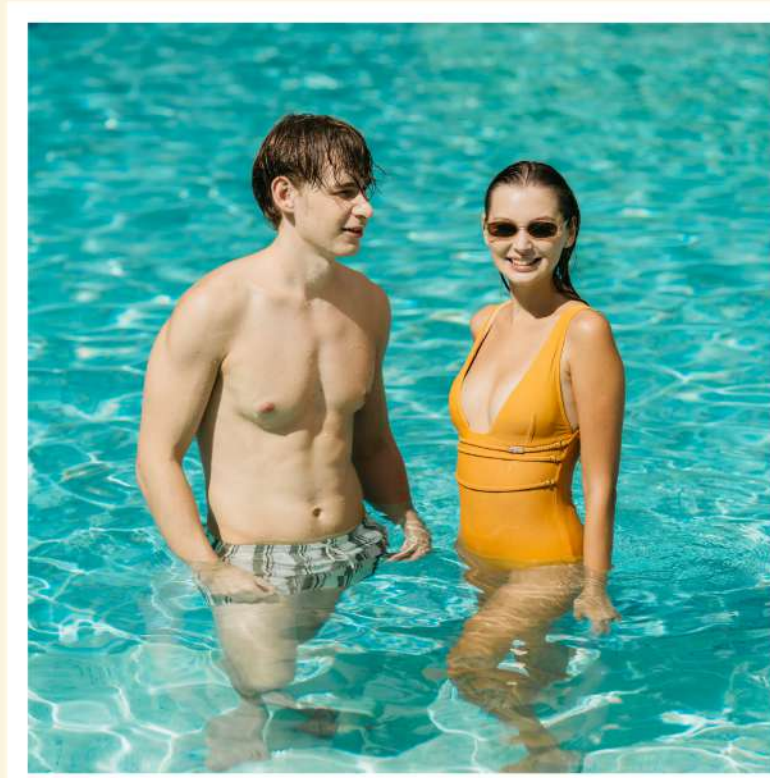
NATURE



URBAN  
*Life*



*Living in balance  
where modern energy flows with nature's vibe.  
Surrounded by mountain views, sparkling water,  
and open-air sunlight.*



*THE TITLE SIERRA  
brings you a new rhythm of living - stylish,  
social, and naturally alive.*

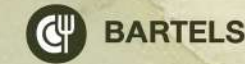
**BANG-TAO  
BEACH**



LAGUNA GOLF



THANYAPURA MEDICAL CENTER



BARTELS



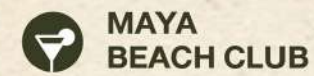
BOAT AVENUE



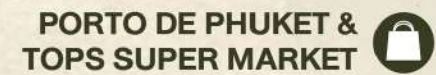
GOLF SAVER



SIAMSPORTSPRO TENNIS ACADEMY PHUKET



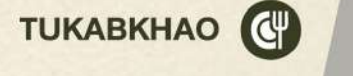
MAYA BEACH CLUB



PORTO DE PHUKET & TOPS SUPER MARKET



LITTLE ROMA



TUKABKHAO



CHERNGTALAY POLICE STATION



PHUKET GOLF CENTRE



BLUE TREE PHUKET & BARTELS



CATCH BEACH CLUB

theTITLE  
**SIERRA**



HOMEPRO & VILLA MARKET



NIYAMA SPA & WELLNESS



CARPE DIEM BEACH CLUB



HEADSTART INTERNATIONAL SCHOOL



REBEL ROCK CLIMBING



BANG NIAO DAM RESERVOIR



HELSINKI INTERNATIONAL SCHOOL



*the* TITLE   
SIERRA

# CLOSE TO VARIOUS LIFESTYLE MALLS



**HOMEPRO & VILLA MARKET**



**PORTO DE PHUKET**



**BOAT AVENUE**



**BLUE TREE**

*Just steps away from HomePro & Villa Market, surrounded by Phuket's top lifestyle destinations Porto de Phuket, Boat Avenue, and Blue Tree.*



NEXT DOOR TO

# VILLA MARKET



EVERYTHING  
YOU NEED,  
RIGHT  
NEXT DOOR

**BRUNCH  
& BREW**



**VILLA  
MARKET**



**PINEWOOD  
MASSAGE & SPA**



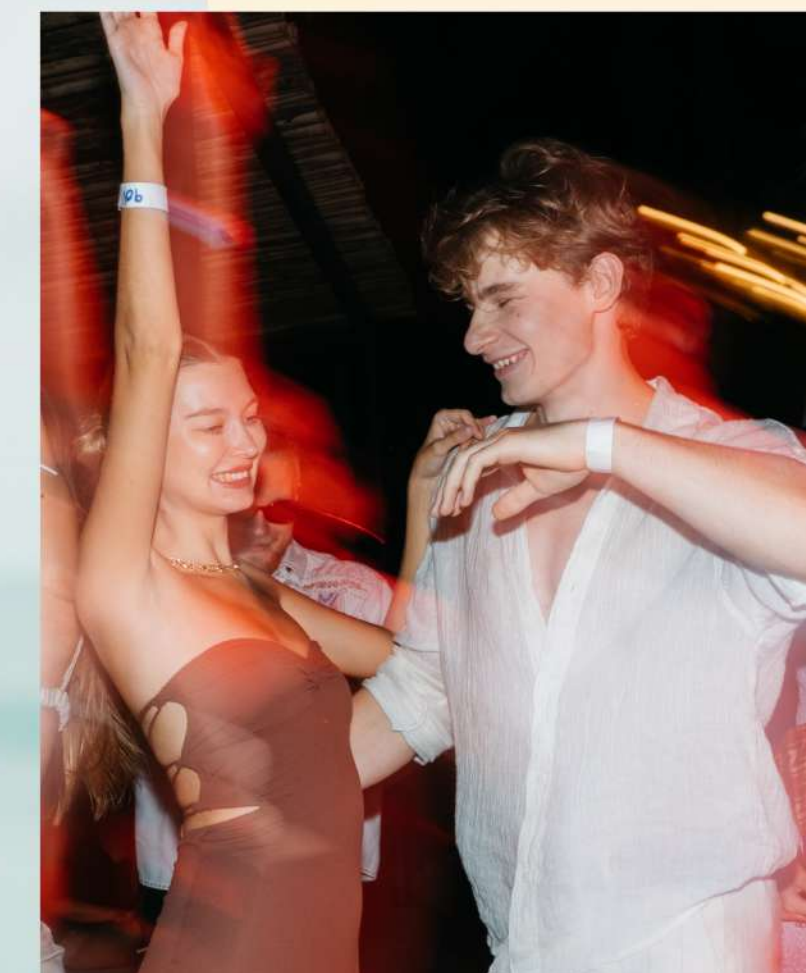
**STARBUCKS**



**JUST 10 MINUTES AWAY  
FROM**

# BANG-TAO BEACH

*Shuttle Service is provided  
to take you to the beach.*



**JUST 5 MINUTES  
AWAY FROM  
INTERNATIONAL  
SCHOOLS**



**HEADSTART  
INTERNATIONAL SCHOOL**



**KAJONKIET  
CHERNGTALAY SCHOOL**



**HEI SCHOOLS PHUKET**

*The***TITLE**   
**SIERRA**



GOLF COURSE



TENNIS COURT



theTITLE  
SIERRA

ENJOY AN ACTIVE LIFESTYLE  
ACTIVITIES  
AROUND THE AREA

ROCK CLIMBING



WATER SPORT



## PROJECT AREA

4-1-29.23 RAIS (6,916.9 SQ.M.)

## PROJECT DETAIL

3 RESIDENTIAL BUILDINGS,  
8 STOREYS

TOTAL **452** UNITS

# 4 KEY PILLARS OF SUSTAINABLE DESIGN



## ECO - FRIENDLY

OVER 1,700 SQ.M. OF GREEN SPACE, LOCAL AIR-PURIFYING PLANTS, AND A COURTYARD LAYOUT BRING NATURE CLOSER TO EVERYDAY LIFE. "SIERRA SILHOUETTE" ARCHITECTURE CREATES NATURAL SHADE AND VENTILATION FOR A COOLER, PET-FRIENDLY ENVIRONMENT.

AT THE TITLE SIERRA, NATURE MEETS THE RHYTHM OF LIVING.



## WELLNESS

INCLUSIVE SPACES WITH LIFTS, RAMPS, AND GREEN AREAS ENSURE EVERY SPACE IS SAFE AND ACCESSIBLE THROUGH UNIVERSAL DESIGN. LAP POOL, YOGA LAWN, AND PLAY YARDS FOR KIDS AND PETS BRING BALANCE TO EVERYDAY LIVING.

AT THE TITLE SIERRA, EVERY SPACE INSPIRES WELL-BEING.



## SERVICE

DESIGNED FOR YOUR EVERYDAY COMFORT, MAKING EVERYDAY LIVING RELAXED, NATURAL, AND EFFORTLESS. WE OFFER THOUGHTFUL SERVICES THAT MAKE LIFE SMOOTH, CONVENIENT, AND IN HARMONY WITH NATURE.

AT THE TITLE SIERRA, LIVING WELL IS LIVING IN BALANCE.



## TECHNOLOGY FOR LIVING

SMART COMFORT MEETS NATURAL LIVING WITH DIGITAL ACCESS, TOUCHLESS FEATURES, AND ENERGY-SAVING SYSTEMS FOR EVERYDAY EASE.

AT THE TITLE SIERRA, SMART LIVING BRINGS PEACE OF MIND IN EVERY MOMENT.

# WELL-KNOWN DESIGNER

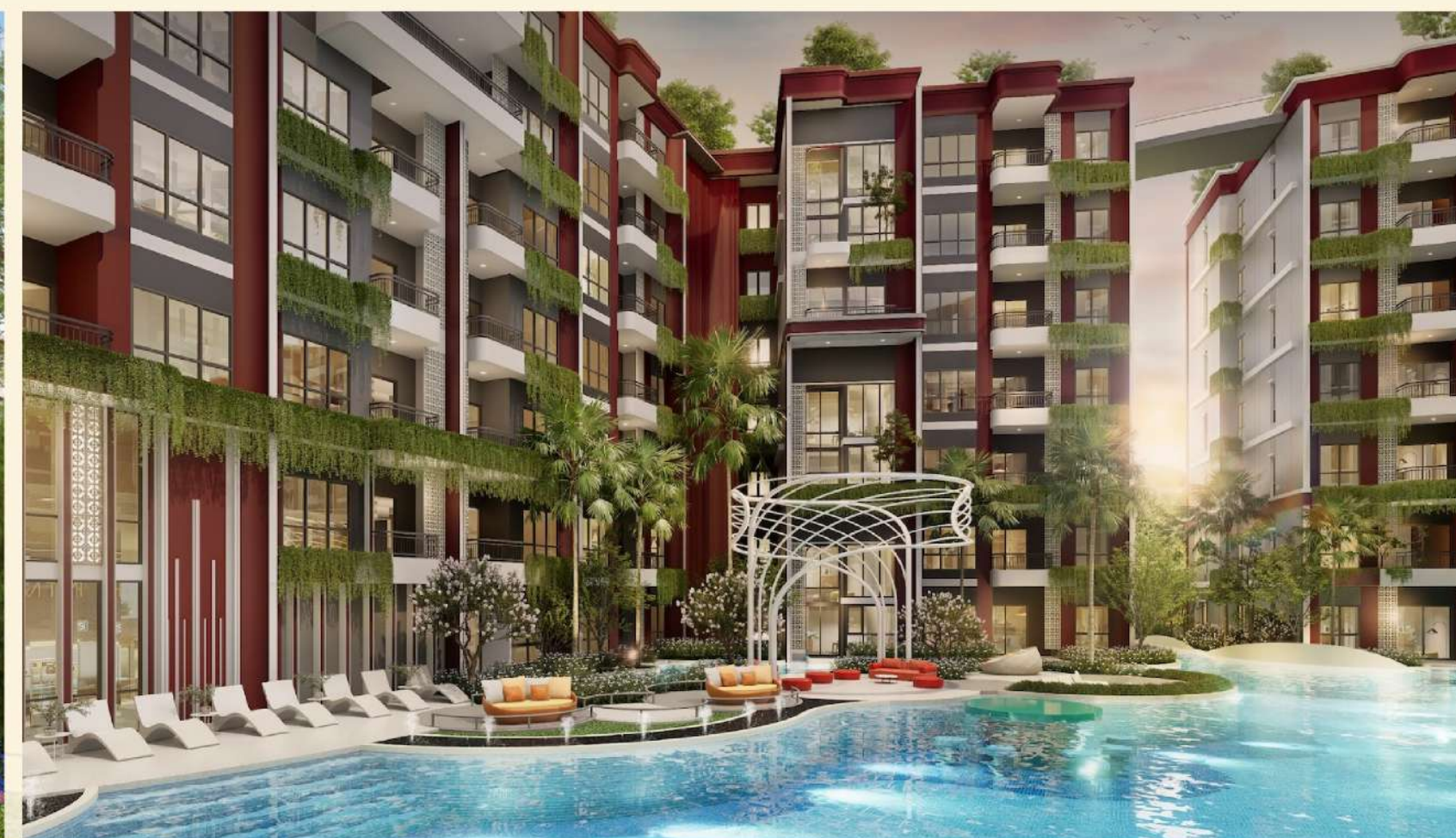
ARCHITECTURE  
DESIGN by  
**A+CON**

LANDSCAPE DESIGN by



INTERIOR DESIGN by

**FOUREYES**



# CONCEPT DESIGN

# THE FLOW OF LIVING

*Inspired by the mountain's form, light,  
and natural movement, the design creates spaces  
that feel vibrant, refreshing, and relaxed.*

*The flow of an urban leisure lifestyle -- active,  
stylish, and naturally alive.*



## TOTAL

**GREEN AREA 1,745 SQ.M.**

GREEN AREA ON GROUND 1,100 SQ.M.

GREEN AREA ON 2<sup>nd</sup> FLOOR 30 SQ.M.

GREEN AREA ON ROOF TOP 615 SQ.M.

**COMMON AREA 1,525 SQ.M.**

POOL AREA 410 SQ.M.

FACILITIES AREA 1,115 SQ.M.

# 24

## FACILITIES



### 12 OUTDOOR FACILITIES

#### 1<sup>ST</sup> FLOOR

- HIDDEN YARD
- PET YARD
- PLAY YARD

#### 2<sup>ND</sup> FLOOR

- LAP POOL (4 X 25 M.)
- SIP BAR
- DRIFT POOL
- PARTY POOL
- KIDS POOL

#### ROOFTOP

- CLOUD LOUNGE
- THE LUNA POOL
- CLOUD YARD
- YOGA LAWN

### 12 INDOOR FACILITIES

#### 1<sup>ST</sup> FLOOR

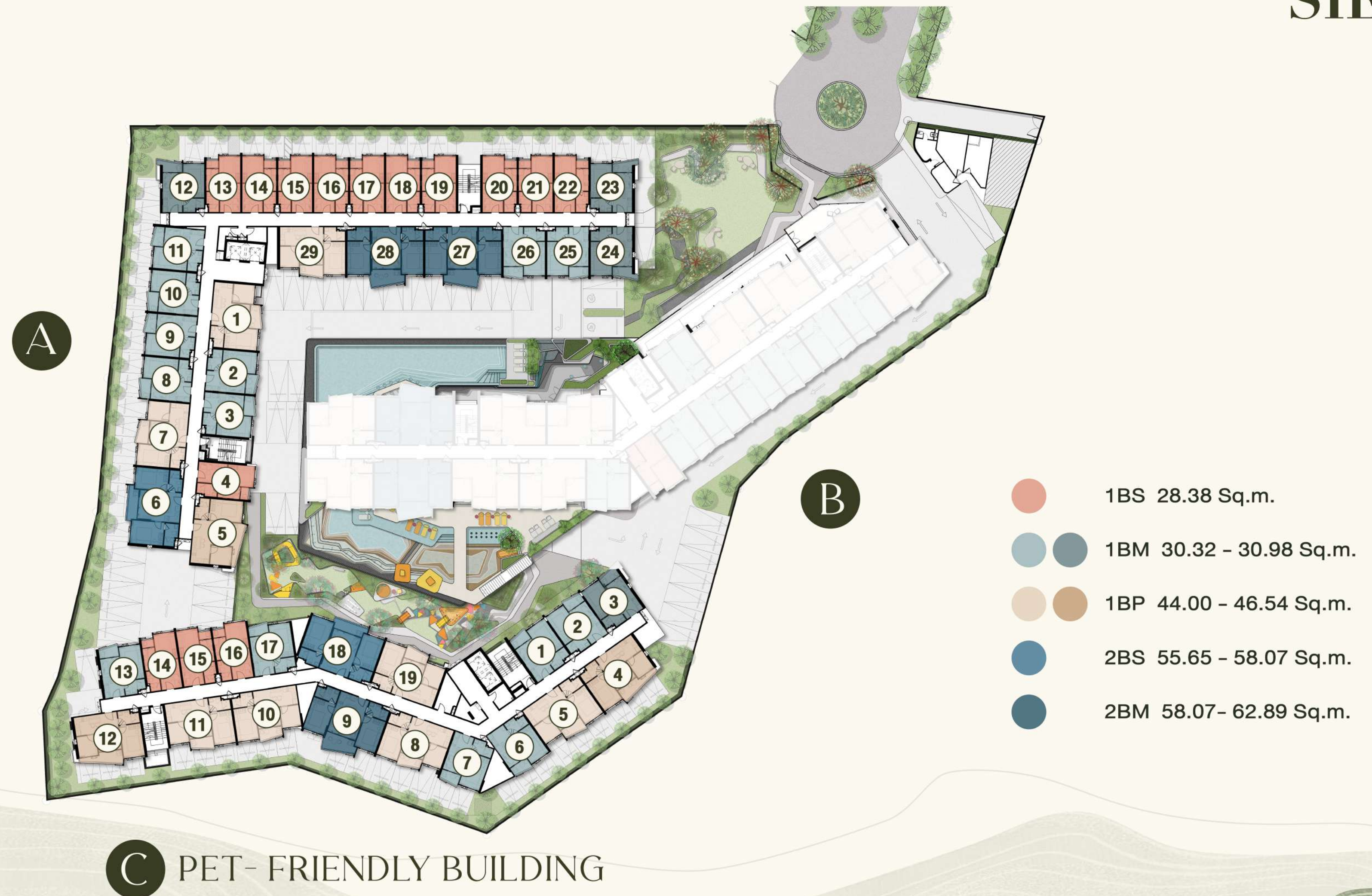
- LOBBY LOUNGE
- LAUNDRY

#### 2<sup>ND</sup> FLOOR

- THEATER ROOM
- PLAY STATION
- GAME ROOM
- KIDS ROOM
- BEACH LOUNGE
- CO-WORKING AREA
- MEETING ROOM
- PRIVATE MEETING ROOM
- THE GYM
- STEAM

# MASTER PLAN

# MASTER PLAN



# UNIT TYPE

# UNIT TYPE

• 1 BEDROOM S

---

• 1 BEDROOM M

---

• 1 BEDROOM PLUS

---

• 2 BEDROOM S

---

• 2 BEDROOM M



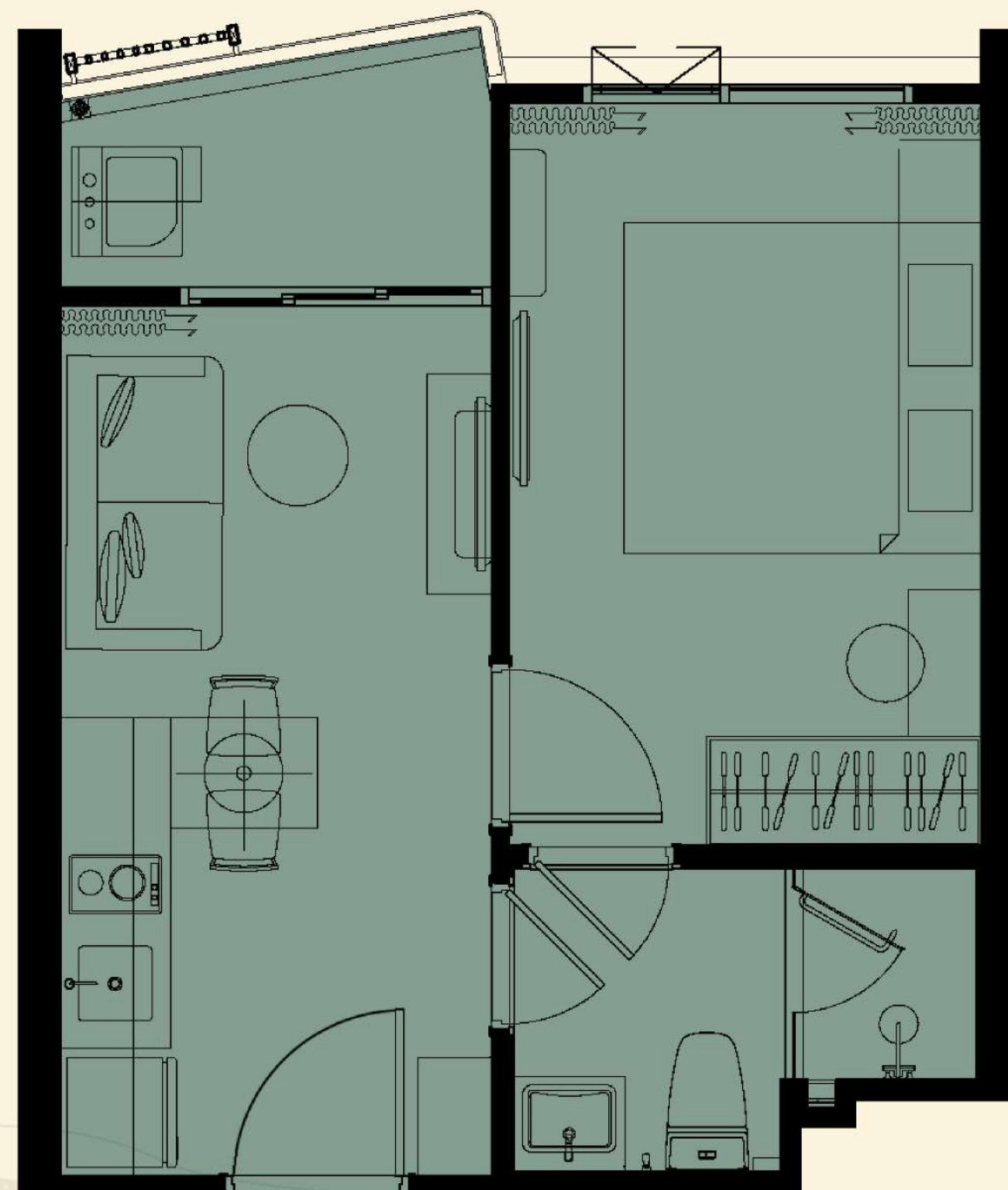
# UNIT PLAN

**1 BEDROOM S**

**28.38 SQ.M.**



## 1 BEDROOM M

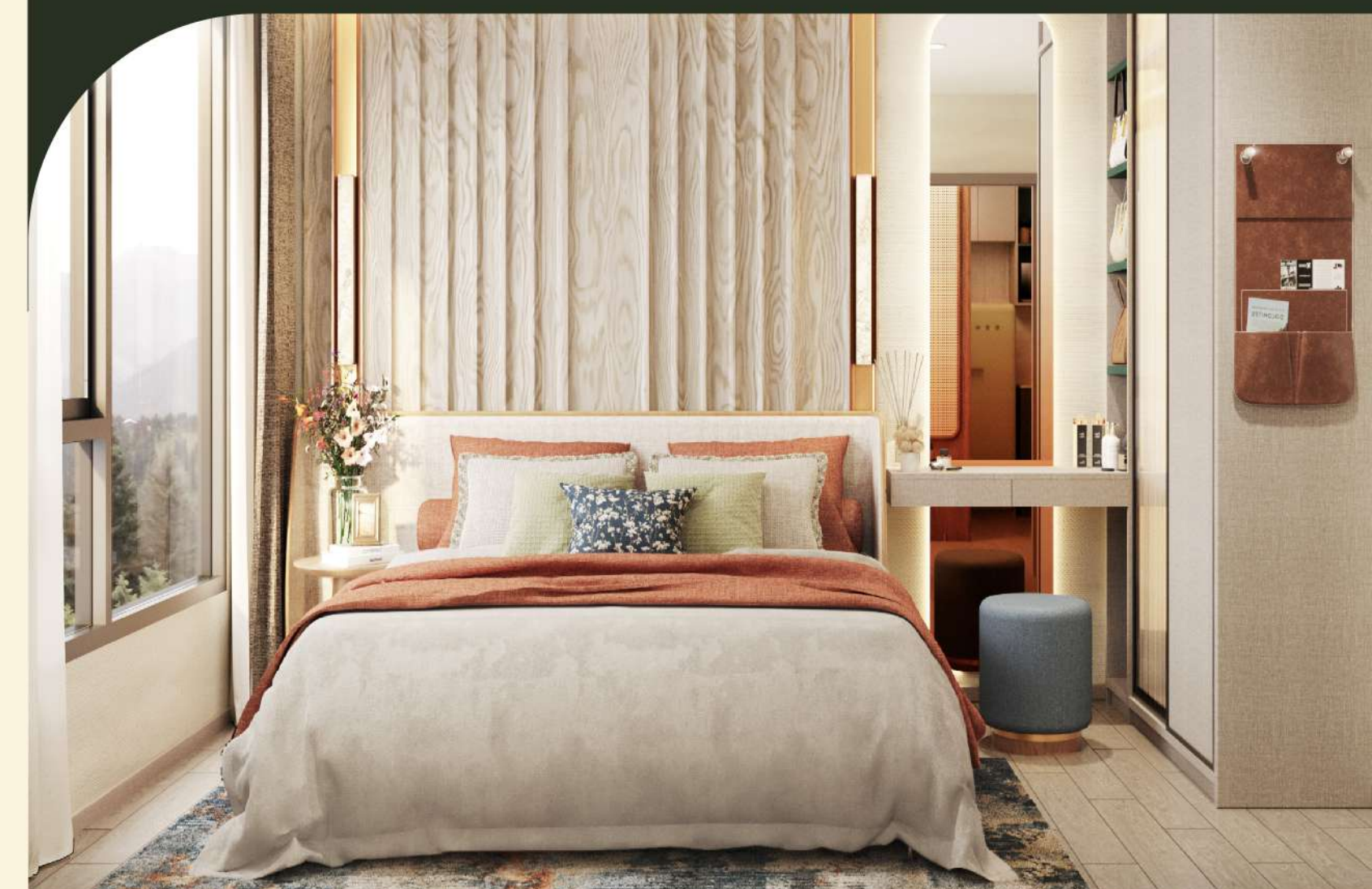


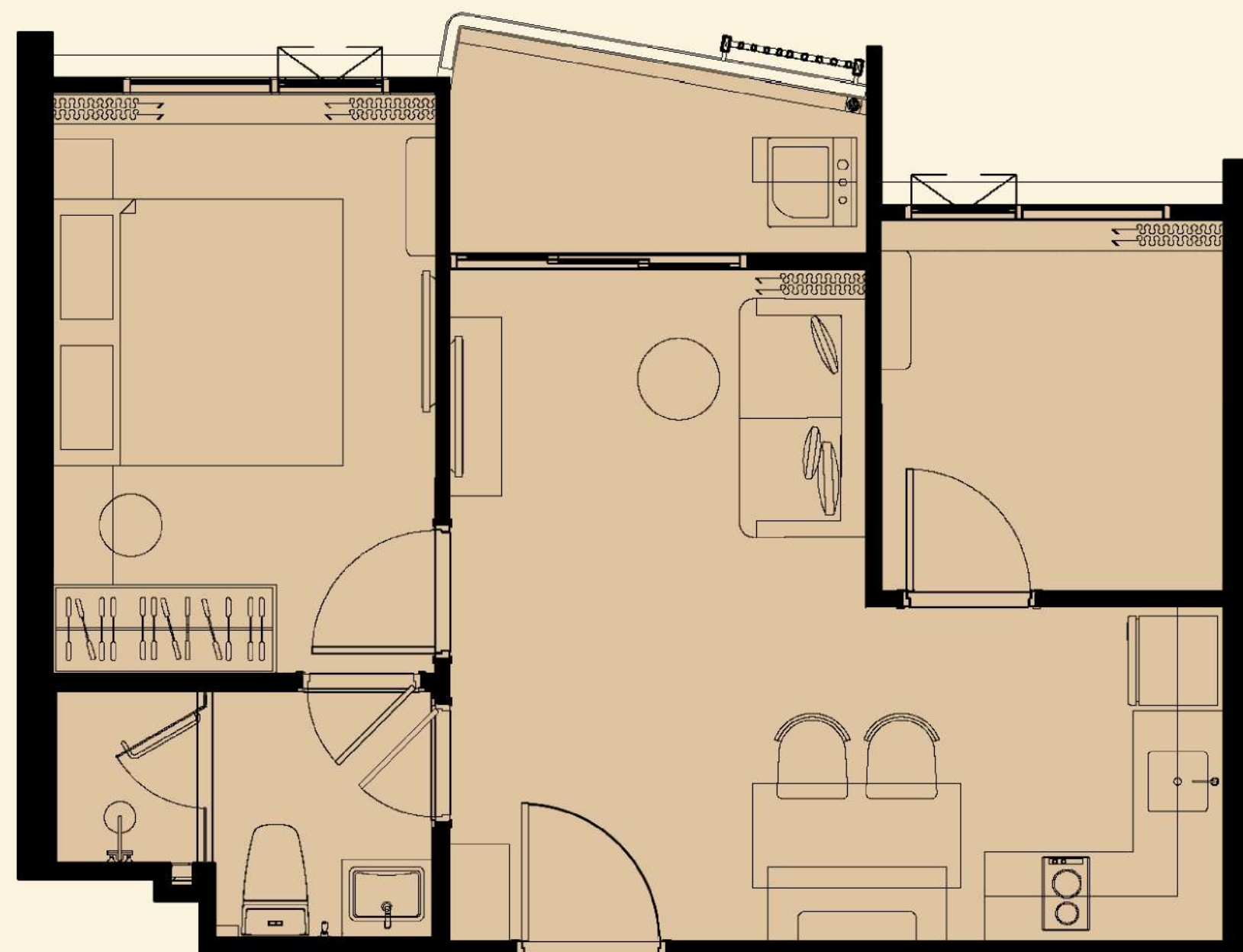
# UNIT PLAN

**1 BEDROOM M**

**30.32 - 30.98 SQ.M.**

## 1 BEDROOM PLUS

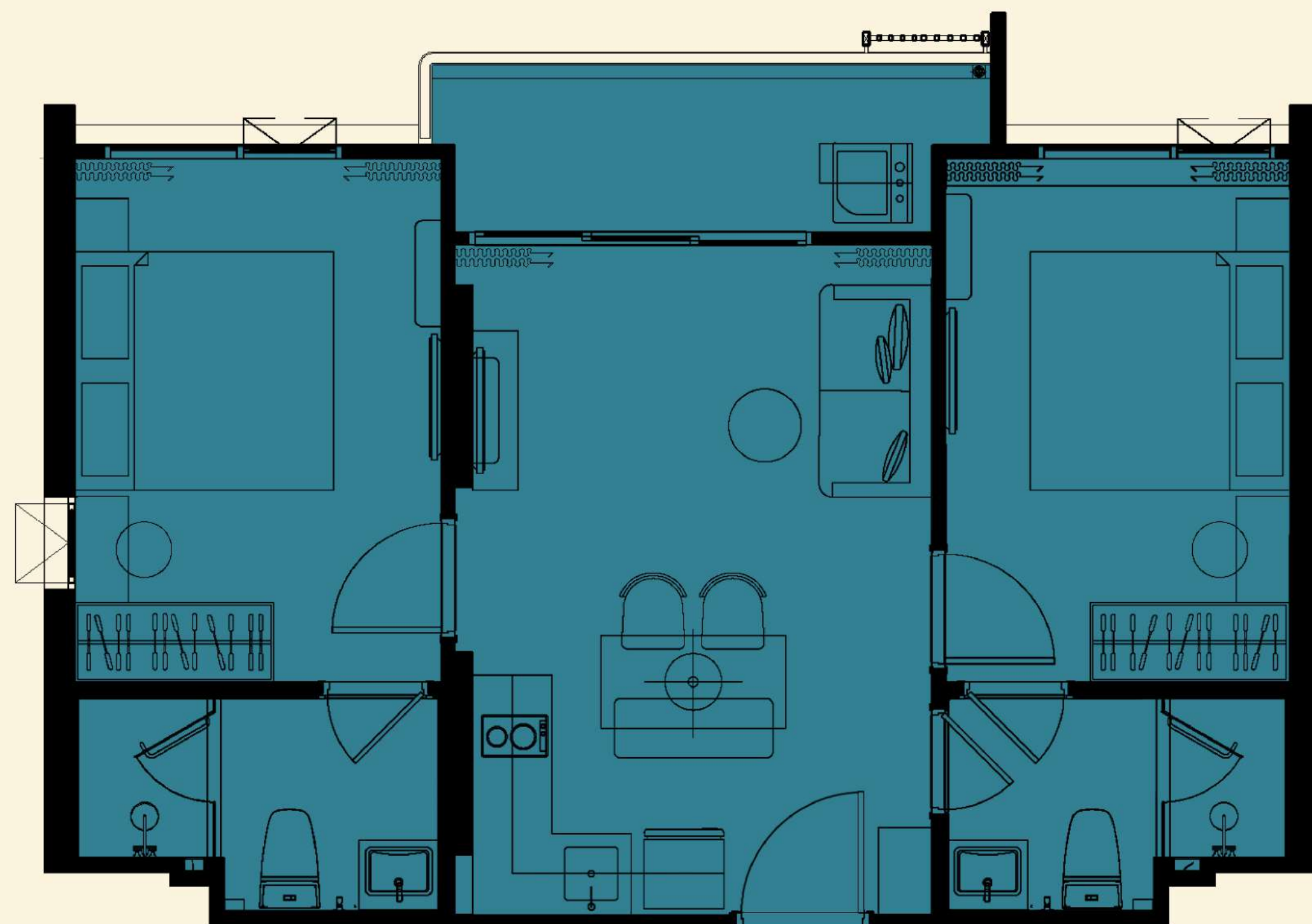




# UNIT PLAN

**1 BEDROOM PLUS**

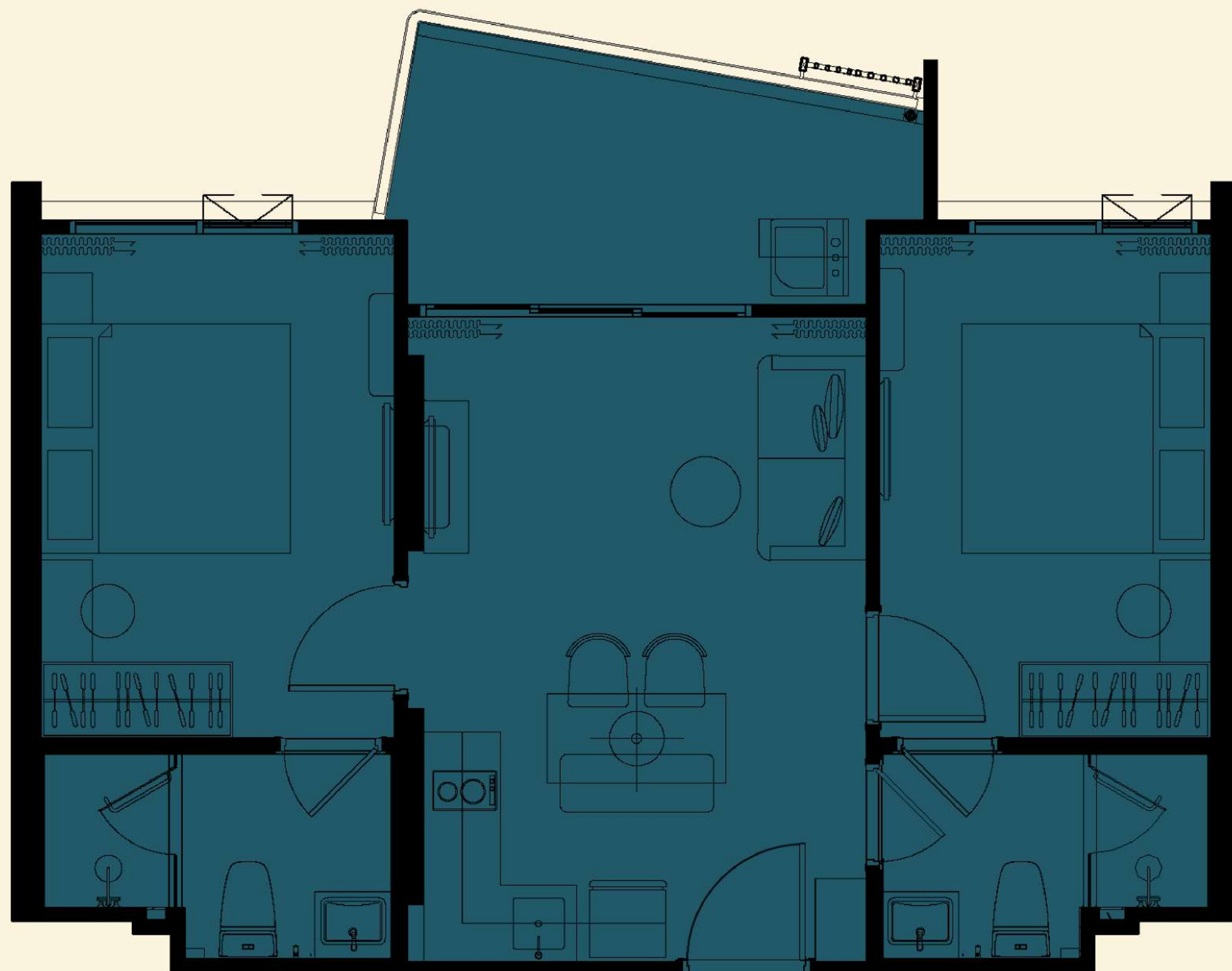
**44.00 - 46.54 SQ.M.**



# UNIT PLAN

**2 BEDROOM S**

**55.65 SQ.M.**



# UNIT PLAN

**2 BEDROOM M**

**58.07- 62.89 SQ.M.**

# the ESQUIRE



PROPERTY  
MANAGEMENT



RENTAL SERVICE



MAINTENANCE  
AND REPAIR



CLEANING SERVICE



PRIVILEGE  
MEMBER CLUB



SHUTTLE SERVICE

# PROJECT STATUS

## EIA PROCESS



**EIA : IN PROGRESS (PUBLIC HEARING)**

**TENTATIVE EIA SUBMISSION :  
JANUARY 2026**

**EIA APPROVAL : Q1/2026**

## CONSTRUCTION STARTS



**Q2/2026**

## EXPECTED TO COMPLETE



**Q3/2028**





NATURE &  
URBAN LIFE  
WITHIN REACH

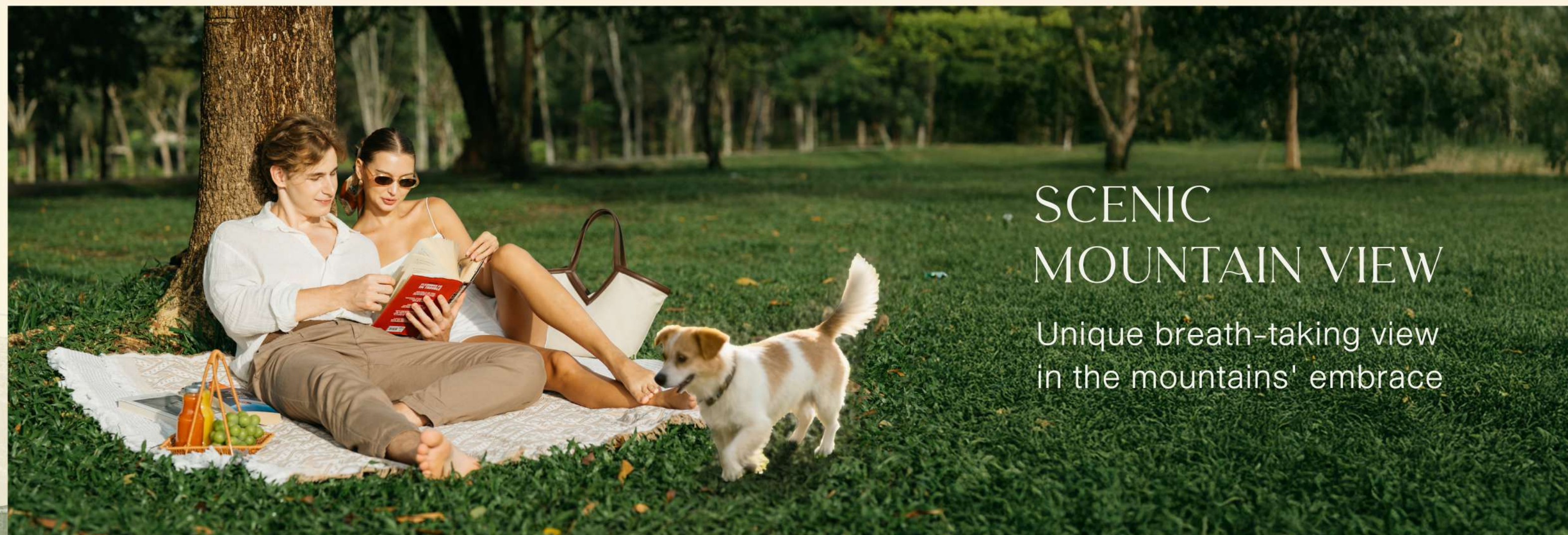
## EVERYDAY EASE

Where everything you need is just minutes away both daily convenience and beach life.



## EXTENSIVE FACILITIES & PET-FREINDLY LIVING

24 facilities designed specially for all lifestyles.



## SCENIC MOUNTAIN VIEW

Unique breath-taking view in the mountains' embrace

# PRICE RANGE

# PRICE RANGE



ROOM TYPE	UNITS	AREA (SQ.M.)	PRICE RANGE
<b>1 BEDROOM S</b>	<b>105</b>	<b>28.38 SQ.M.</b>	<b>2.87 - 4.07</b> MB.*
<b>1 BEDROOM M</b>	<b>174</b>	<b>30.32 - 30.98 SQ.M.</b>	<b>3.09 - 4.52</b> MB.*
<b>1 BEDROOM PLUS</b>	<b>129</b>	<b>44.00 - 46.54 SQ.M.</b>	<b>4.55 - 7.11</b> MB.*
<b>2 BEDROOM S</b>	<b>13</b>	<b>55.65 SQ.M.</b>	<b>5.53 - 7.40</b> MB.*
<b>2 BEDROOM M</b>	<b>31</b>	<b>58.07 - 62.89 SQ.M.</b>	<b>5.78 - 7.88</b> MB.*

# ACCOUNT NAME FOR PAYMENT

RHOM BHO PROPERTY PUBLIC COMPANY LIMITED

BANK NAME	BRANCH	ACCOUNT NO.	SWIFT CODE
<b>KASIKORN BANK</b>	HA YAEK CHALONG PHUKET, 16/41-42 MOO 8 CHALONG, MUANG PHUKET, PHUKET 83000 THAILAND T.+66 (0) 7638 1710, +66 (0) 7638 1388-9	<b>588-2-06436-2</b>	<b>KASITHBK</b>



# SCAN FOR MORE INFORMATION



[SALES@RHOMBHO.CO.TH](mailto:SALES@RHOMBHO.CO.TH)

+66 63 642 8111

# NATURE & URBAN LIFE

WITHIN REACH

